

Beginners Guide

From "AllStarLink Wiki"

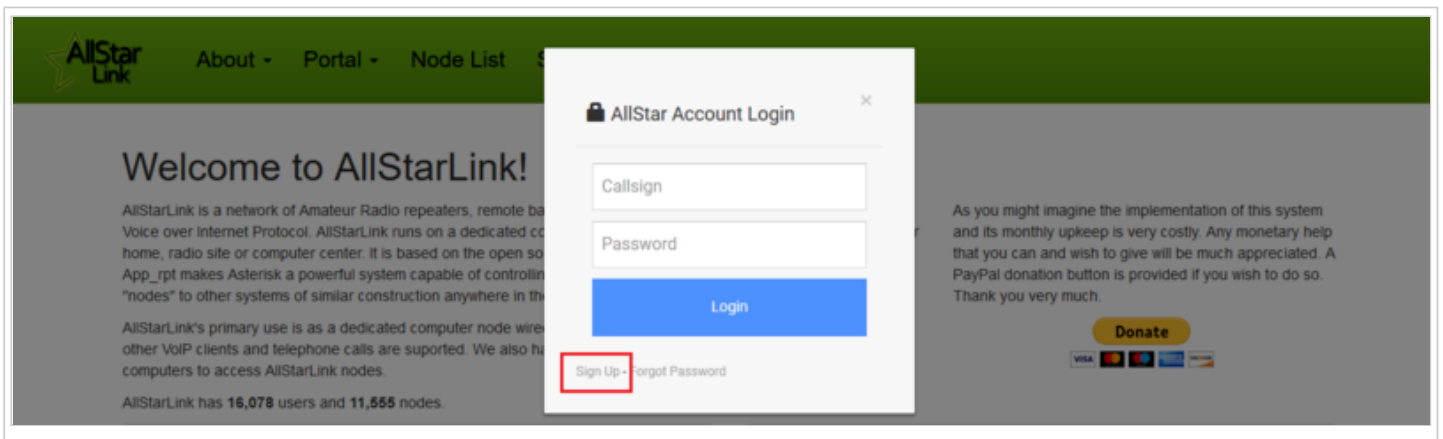
AllStarLink for beginners.

Contents

- 1 The first step is to create an account.
- 2 Download ASL image file
- 3 Login to your account
- 4 Create a Server
- 5 Request a Node number
- 6 Edit Node settings
- 7 Install and configure ASL to your computer

The first step is to create an account.

Go to <https://allstarlink.org/> and click the sign up link.



Download ASL image file

While you are awaiting the verification of your account (usually within 24 hours) you may download one of the image files for you computer system you will use to run your AllStarLink node.

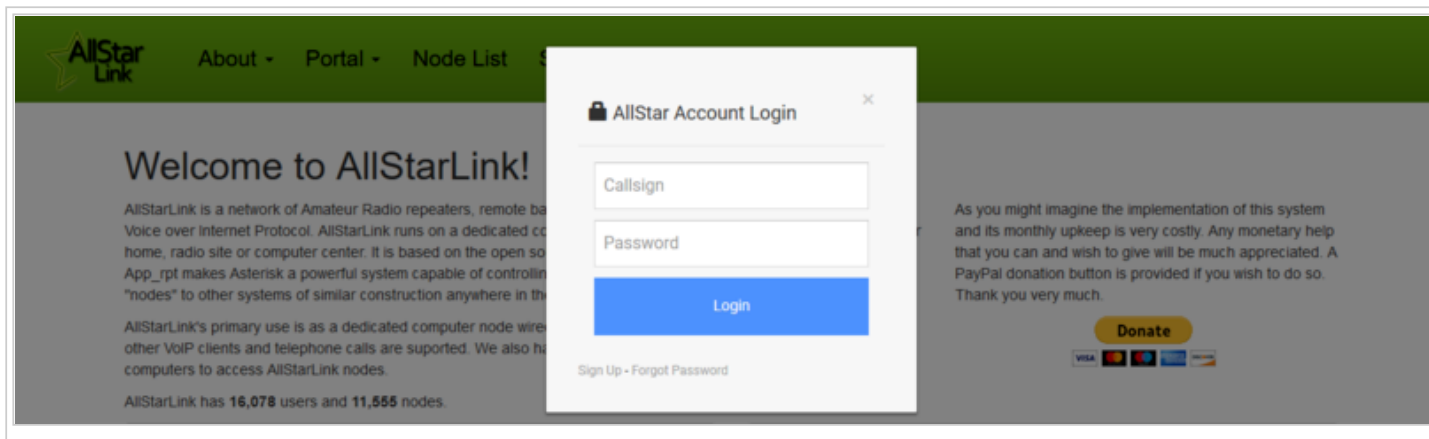
Go to wiki.allstarlink.org scroll down to the Downloads section and select the appropriate image for the type of system you will use.



Write the image file to media. Either a USB memory stick, CD or DVD, or a microSD card (Raspberry Pi).

Login to your account

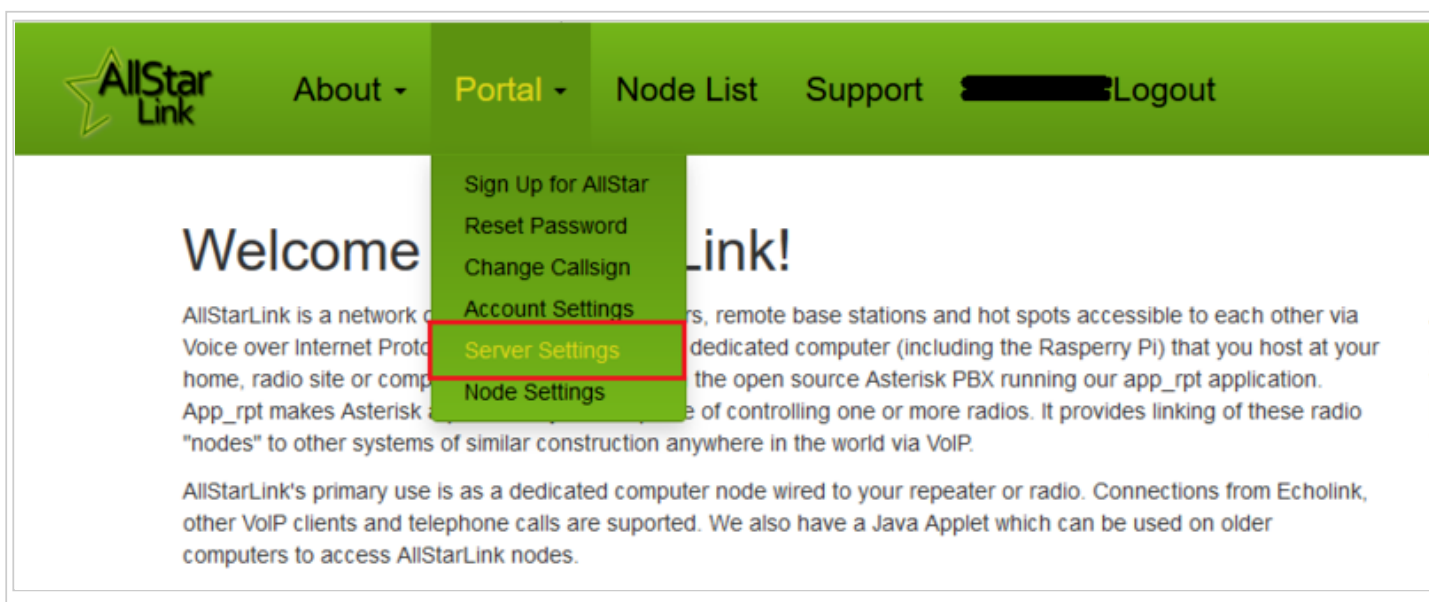
You will need to login to your account at <https://allstarlink.org/>



Click on **Login/Signup** as shown in the image above.

Create a Server

You will need to create a "server" : Click on <portal> then <server settings>



Click on <Add a new server>

Please take the time to read the instructions on each page.

Then click <Proceed with Server Setup> if needed.

Fill in all of the information and click <submit> at the bottom of the page.

Server Settings

Edit Server

Server Name

25 characters max

Server Location

City/State/Province of server location. 30 characters max.

Site

Site Name, Bldg Number, etc. 30 characters max. Optional.

Affiliation

Affiliated with a club, etc. 30 characters max. Optional.

Hostname

Unix Hostname. 25 characters max. Optional.

IAX Port

Normally 4569 when only one server behind a NAT router.

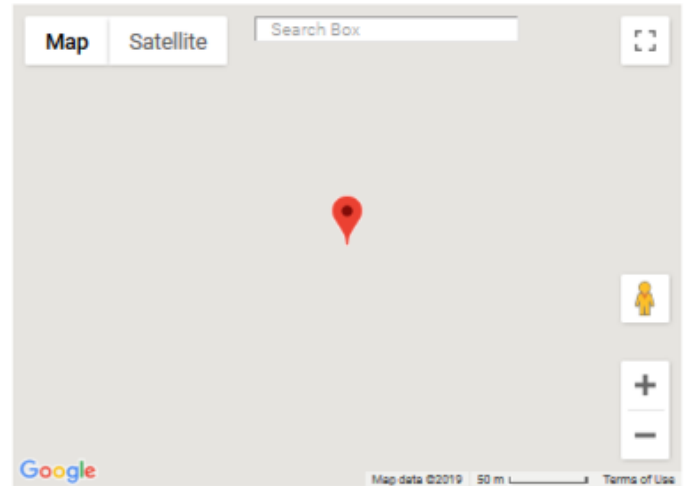
Proxy IP

Normally blank. Only needed in rare cases. Optional.

Click the map to select server latitude & longitude or type them in.

Latitude

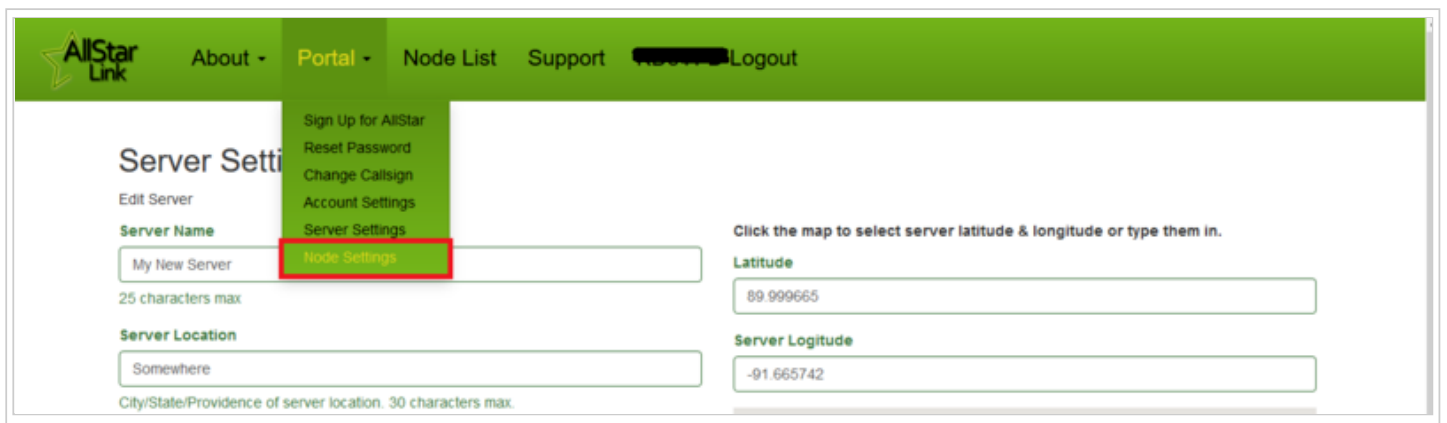
Server Longitude



Submit

Request a Node number

At the top of the page, click <portal> <node settings>



Then click <Request a new node number>

The screenshot shows the 'Node Settings' page on the AllStarLink website. At the top, there is a green navigation bar with the AllStarLink logo and links for 'About', 'Portal', 'Node List', 'Support', and 'Logout'. Below the navigation bar, the page title is 'Node Settings'. A red box highlights the link 'Request a new node number' with the text 'or edit one below:'. Below this is a table with the following columns: 'Node number', 'Server', 'Callsign', 'Password', 'Web Xceiver', 'Show Cmds', 'Rvrs Ap', 'Phone Portal', 'Rmt Base', and 'Agile'. The table contains one row with the following values: '50505', 'My New Server', a redacted callsign, a redacted password, 'Yes', 'No', 'No', 'Yes', 'No', and 'No'. Below the table, there is a note: '1 Mouseover password to show.'. At the bottom of the page, there is a footer with the copyright notice '© 2019 AllStarLink Inc' and a dedication: 'This site is dedicated to the memory of Jim Dixon WB6NIL'.

Select which server you would wish to have a node number assigned to

if you need more than one node number for the same server, repeat this process

A comment of 'additional node on same server' would be appropriate

The screenshot shows the 'Node Settings' page on the AllStarLink website, specifically the 'Request New Node Number' form. At the top, there is a green navigation bar with the AllStarLink logo and links for 'About', 'Portal', 'Node List', 'Support', and 'Logout'. Below the navigation bar, the page title is 'Node Settings'. The form has a section titled 'Request New Node Number'. Under this section, there is a 'Server' dropdown menu with 'My New Server' selected, highlighted by a red box. Below the dropdown, there is a note: 'Select server for the new node. It can be changed later.'. Below this, there is a warning: 'Do not request additional nodes here. Only one node per request can be processed.'. Below the warning, there is a section titled 'Message for Admins' with a text input field containing the text 'Requesting my first node number. Thank you very much.', highlighted by a red box. Below the text input field, there is a note: 'Optional message.'. At the bottom of the form, there is a blue 'Submit' button. At the bottom of the page, there is a footer with the copyright notice '© 2019 AllStarLink Inc' and a dedication: 'This site is dedicated to the memory of Jim Dixon WB6NIL'.

Once your node number request(s) are processed you will receive an email.

Edit Node settings

Log into your account on <https://allstarlink.org/>

Click <portal> then <node settings>

The AllStarLink node numbers that have been assigned to you are displayed here.

Select which node you wish to view/edit.

Fill in the information for you node and click <submit>

Node Settings

Edit Node 

Node Number

50505

Node number cannot be changed.

Password

PASSWORD

6 to 15 characters.

Callsign

WB6NIL

15 characters max.

Frequency

146.520

20 characters max. Optional.

CTCSS Tone

103.1

20 characters max. Optional.

My New Server Select the server for this node.

Yes Allow Web Transceiver access?

No Show function list on Webtransceiver?

No Allow Reverse Autopatch access?

Yes Allow Telephone Portal access?

No Is node a remote base station?

No If remote base, is it frequency agile?

Submit

Write down your node number, password and the call sign you assigned for the node as you will use them to configure your AllStarLink system.

Install and configure ASL to your computer

Consult your owners manual or your favorite internet search engine for how to install an image for your computer system.

Install the AllStarLink disk image to your computer. Insert the appropriate media for your system and boot the computer.

When the login prompt appears enter the user ID of repeater and press <enter>

Enter the default password of allstarlink

Follow the on screen instructions for the initial password change.

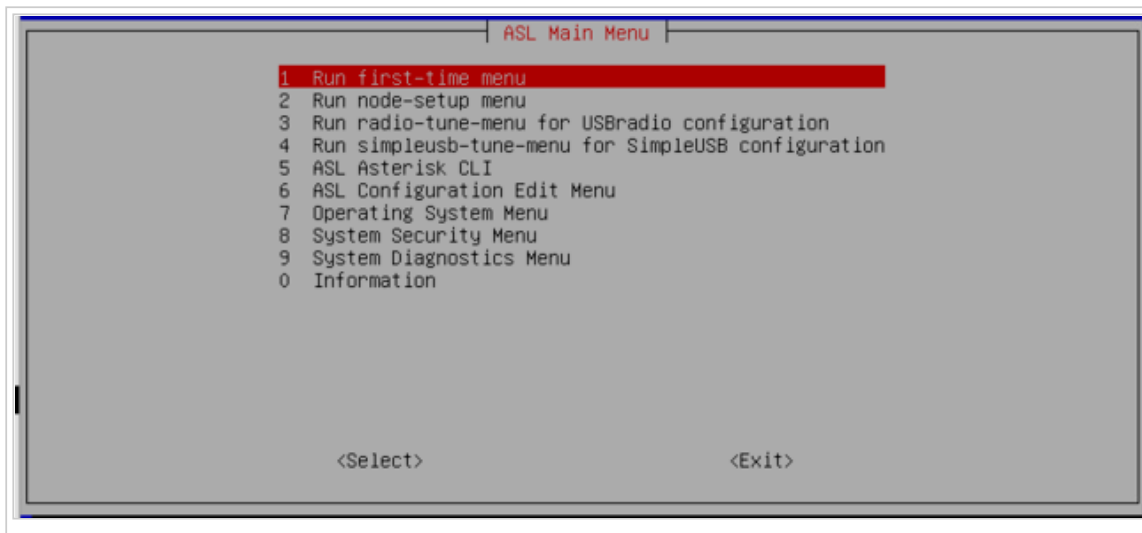
For users familiar with the linux operation system you may proceed to edit the system manually.

For users not familiar with linux and ASL, at the Linux CLI (command line interface)

Type sudo asl-menu as the example below shows.

```
repeater@repeater:~$ sudo asl-menu
```

This will load the AllStarLink configuration menu.



Retrieved from "http://wiki.allstarlink.org/w/index.php?title=Beginners_Guide&oldid=1183"

-
- This page was last modified on 20 January 2019, at 14:57.